



flexibleprecision

Plate Mounting Solutions for Flexographic Printing

maximized efficiency

Process Improvement in Every Roll



We Care about your Process

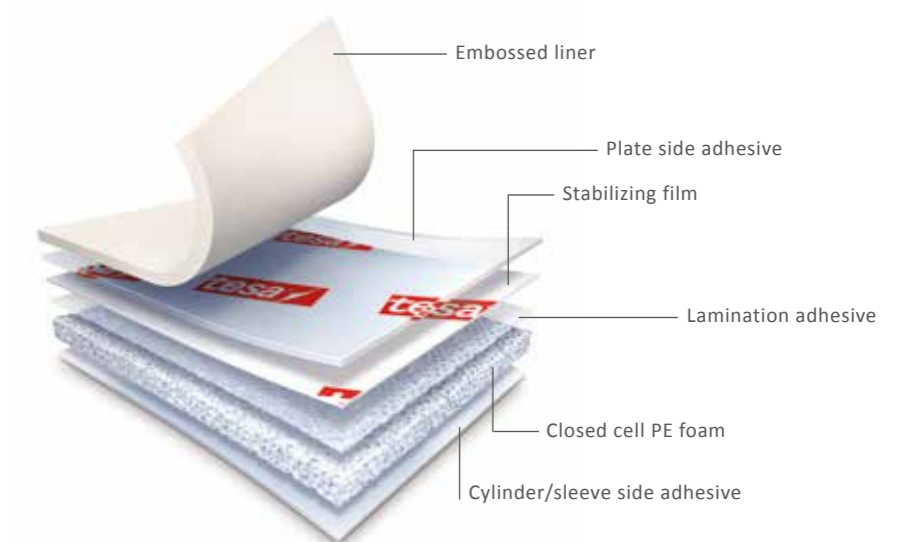
Those who want to stay competitive in the highly dynamic flexo printing market need a reliable partner. With decades of experience and a clear focus on the flexographic market, we continue to invest in product development and staff qualification programs. As a result you can count on our reliable solutions and expert services worldwide.

Product Design Defines Print Quality

Increasing demands on print quality combined with high levels of process efficiency call for specifically tailored plate mounting tapes. The tesa Softprint® plate mounting tapes combine high quality foam and film materials with especially engineered adhesives for excellent print results and optimum handling properties. Not only are the processed components of the highest quality, but they are also handled with utmost care throughout the specifically developed tesa production process.



Due to the direct relationship between foam condition and print results, we at tesa take pride in reducing all interferences with the foam during production to an absolute minimum. No thermal impact and no mechanical stress ensure optimum and even foam recovery for the best cushioning effects and the highest print quality, even at full press speeds.



The next pages provide an overview of the tesa Softprint® assortment which can be combined with additional self-adhesive tape solutions for optimum process efficiency in flexo printing. Our qualified sales staff as well as selected distribution partners competently analyze individual processes and find fitting products for optimum process improvement.

provenbenefits

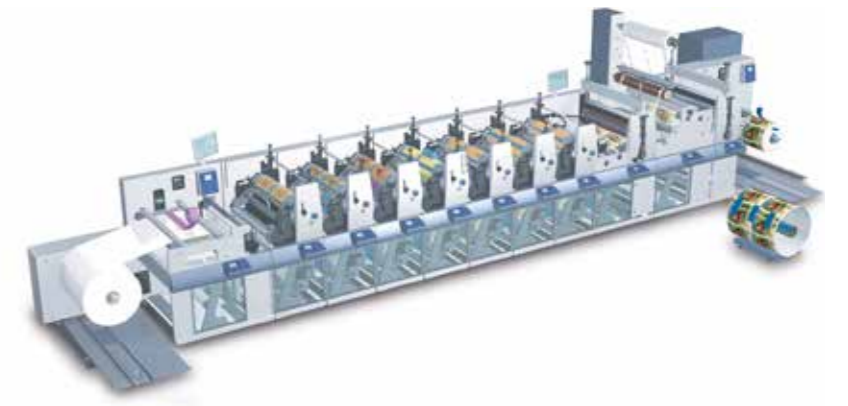
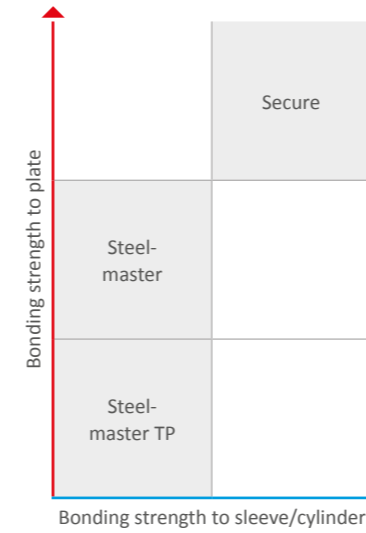
Always a Fitting Solution: tesa Softprint®

At tesa, we offer a wide assortment of Softprint® plate mounting tapes for different requirements regarding foam hardness, adhesive properties, and tape thickness.

Different requirements regarding bonding strength to cylinders and plates call for different adhesive solutions. Distinctive product lines for flexo printers offer the appropriate solution for each requirement.

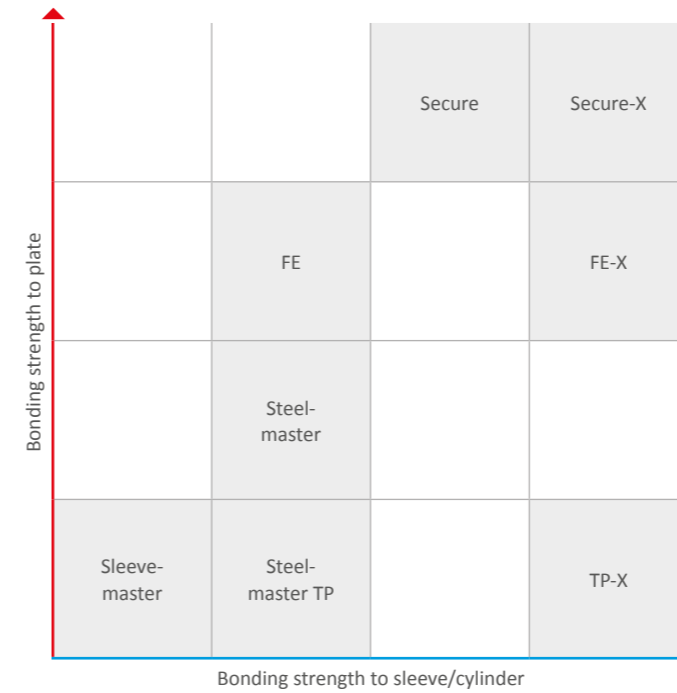
Narrow Web: tesa Softprint® 380 µm/15 mil

	X-Soft	Soft	Medium	Medium-Hard	Hard	Product color code
						Print motif
tesa Softprint® Steelmaster	tesa® 52018	tesa® 52017	-	tesa® 52015	-	
tesa Softprint® Steelmaster TP	tesa® 52118	tesa® 52117	-	tesa® 52115	-	
tesa Softprint® Secure	tesa® 52818	tesa® 52817	tesa® 52816	tesa® 52815	tesa® 52814	



Wide Web: tesa Softprint® 500 µm/20 mil

	X-Soft	Soft	Medium	Medium-Hard	Hard	Product color code
						Print motif
tesa Softprint® Steelmaster	-	tesa® 72022	tesa® 72024	tesa® 72026	tesa® 72028	
tesa Softprint® Steelmaster TP	-	tesa® 72122	tesa® 72124	tesa® 72126	tesa® 72128	
tesa Softprint® Sleevemaster	tesa® 72220	tesa® 72222	tesa® 72224	tesa® 72226	tesa® 72228	
tesa Softprint® TP-X	-	tesa® 72322	tesa® 72324	tesa® 72326	tesa® 72328	
tesa Softprint® FE	-	tesa® 72422	tesa® 72424	tesa® 72426	tesa® 72428	
tesa Softprint® FE-X	-	tesa® 72522	tesa® 72524	tesa® 72526	tesa® 72528	
tesa Softprint® Secure	-	tesa® 72622	tesa® 72624	tesa® 72626	tesa® 72628	
tesa Softprint® Secure-X	-	tesa® 72722	tesa® 72724	tesa® 72726	tesa® 72728	



Our products prove their impressive quality day in, day out in demanding conditions and are regularly subjected to strict controls. All information and recommendations are provided to the best of our knowledge on the basis of our practical experience. Nevertheless, we can make no warranties, expressed or implied, including, but not limited to any implied warranty of merchantability or fitness for a particular purpose. Therefore, the user is responsible for determining whether our product is fit for a particular purpose and suitable for the user's method of application. If you are in any doubt, our technical staff will be glad to support you.

easyapplication

Supporting Tips and Tools

Tips for Optimum Plate Mounting

Cleaning



Process

All elements should be handled at room temperature – or at least at equal temperatures.



Plate cleaning

Clean back of new or used plate of dust, grease, or other contamination using a suitable solvent.



Cylinder/sleeve cleaning

Clean per manufacturer recommendations and wipe dry with clean cloth.

Mounting



Tape mounting

Apply the tape in a sweeping motion, line by line. Use a squeegee for best results.



Plate mounting

Only fix the plate on a narrow area of the tape. Avoid premature contact between plate and tape by using liner material.



Mount plate with rubber roller, at least on the leading and trailing edge. This will give a better bond than just by hand.

Demounting



Plate



Tape

Plate and tape demounting

Remove plate first, then remove the tape slowly at a flat angle.

Our Complementary Products for Flexographic Printing



Roller wrapping tesa® 4863, tesa® 4563

tesa Printer's Friend® roller wrapping tapes offer outstanding "grip" and repel a variety of substances involved in the process (e.g. adhesives or inks).



Flying splice for film materials tesa® 51910

tesa® 51910 EasySplice® FilmLine PLUS enables manufacturers and processors of thin, high-slip films to save time and money by splicing at continuous production speeds.



Zero-speed splice tesa® 4104, tesa® 4137

Sufficient adhesion and shear strength for splicing of all materials, including alternatives for higher temperatures.



Edge sealing tesa® 4244 PV2, tesa® 4287

The adhesives stick on photopolymer plates and are subsequently easy to remove without leaving residues.



Failure flagging tesa® 4104

For marking material imperfections or print faults. This can be done separately due to a selection of available colors.



End tabbing tesa® 4124

To prevent unwinding of finished rolls we offer tapes with safe bonding on all substrates. Available in brown, white, and transparent.



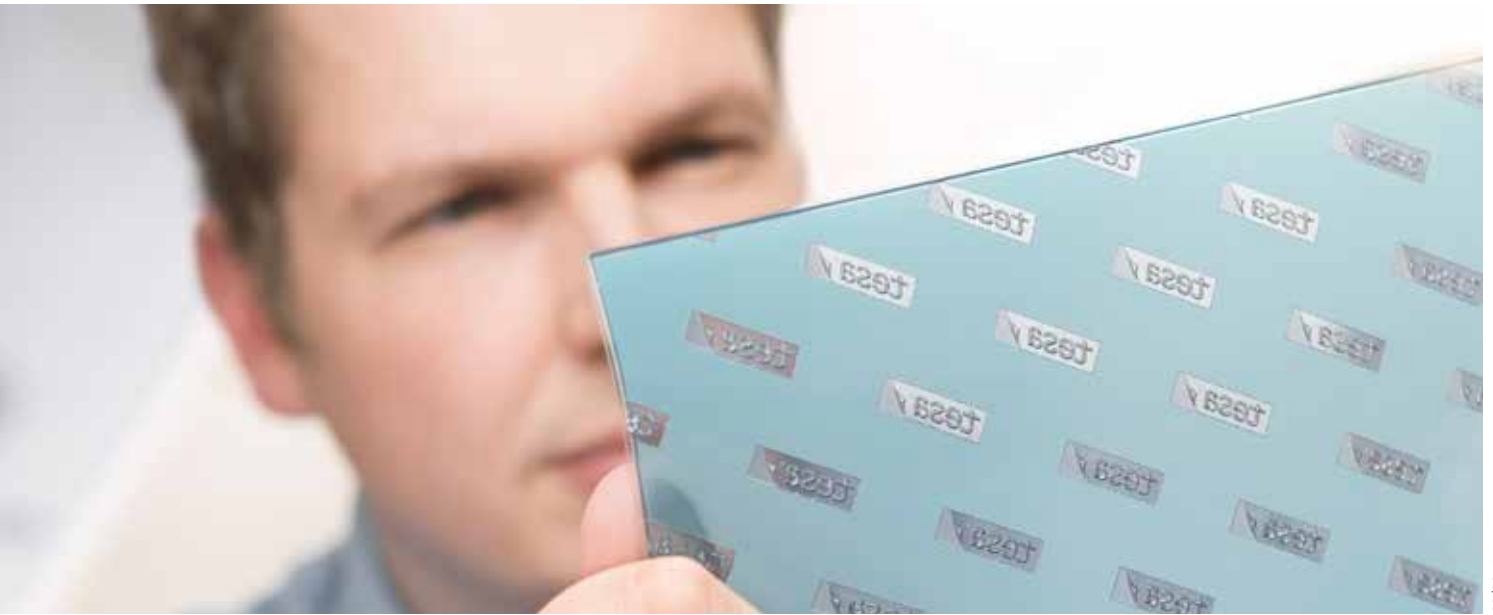
Core starting tesa® 64621

Excellent adhesion properties to ensure the web is securely fixed to the core.



Supportive tools

We also offer supportive tools such as cleaning rollers, rubber rollers, and adhesion promoters to make several process steps more efficient and easier.



08/2015



Our management system is certified according to the standards ISO 9001, ISO 14001, and ISO/TS 16949.